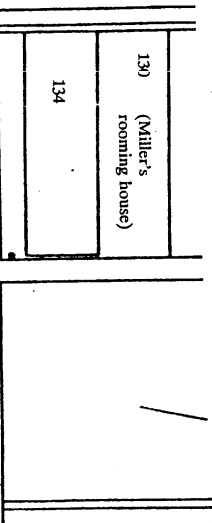
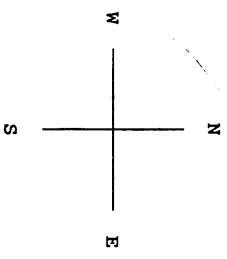
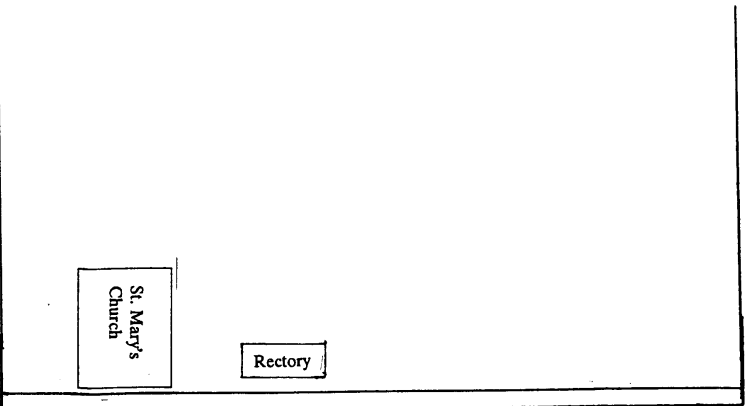


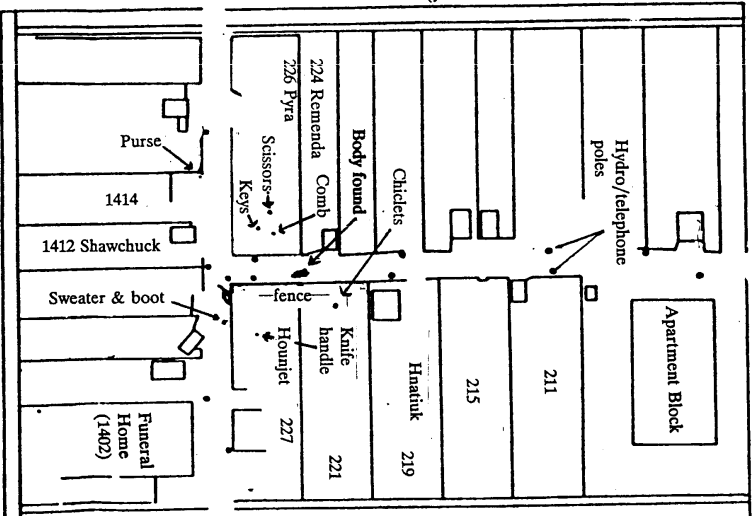
105 Ave "N" South
(Mary Marcoux)



21st Street



Ave "O"

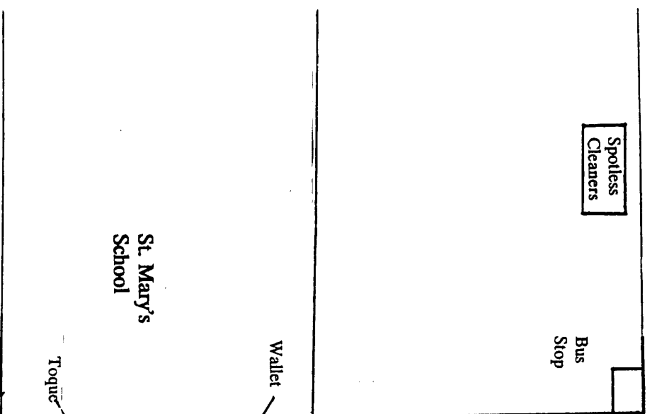


Ave "N"

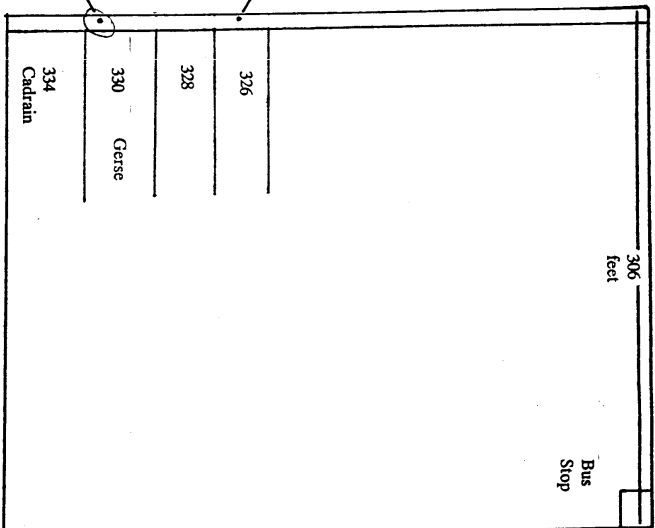
Approximate street widths
 Avenue "O": 30 feet
 Avenue "N": 44 feet
 20th Street: 56 feet
 21st Street: 30 feet

534 feet

20th Street



St. Mary's School



19th Street

Approximate visibility in daylight
(testimony of Officer Klein, vol VI, p. 52)

150-200 feet, which to scale is:



(outer limit)

Approx scale
1 inch = 90 feet

105048

Prepared by: **Chris Tennant**
Law Clerk to Justice Jacobucci